

OVERVIEW

The push-button Dimming Switchpod Series of wall stations are a cost effective solution for commercial and residential lighting applications. Additionally, all sPODMRD sensors have a patent pending wiring method that enables them to function either with or without a neutral connection. sPODMRD units come preconfigured for wiring without a neutral, however, if a connection to neutral is required by code, contractors can convert the unit in seconds.

Warranty

Five-year limited warranty. This is the only warranty provided and no other statements in this specification sheet create any warranty of any kind. All other express and implied warranties are disclaimed. Complete warranty terms located at: www.acuitybrands.com/resources/terms-and-conditions

Note: Actual performance may differ as a result of end-user environment and application. Specifications subject to change without notice



*SPODMRD
Dimming Switchpod*



ORDERING INFORMATION

sPODMRD						Example: sPODMRD 347 WH						
Series	eldoLED		Voltage		Color ⁴		Max Dim Level ⁶		Min Dim Level ⁶			
sPODMRD ² Dimming Switchpod	[blank]	None	[blank]	120/277 VAC	WH	White	[blank]	10 VDC	[blank]	0 VDC	4V	4 VDC
	EZ ¹	eldoLED Driver Compatibility	347 ³	347 VAC	IV	Ivory	9H	9 VDC	1V	1 VDC	5V	5 VDC
					GY	Gray	8H	8 VDC	2V	2 VDC	6V	6 VDC
					AL	Light Almond	7H	7 VDC	3V	3 VDC		
					BK	Black						
					RD ⁵	Red						

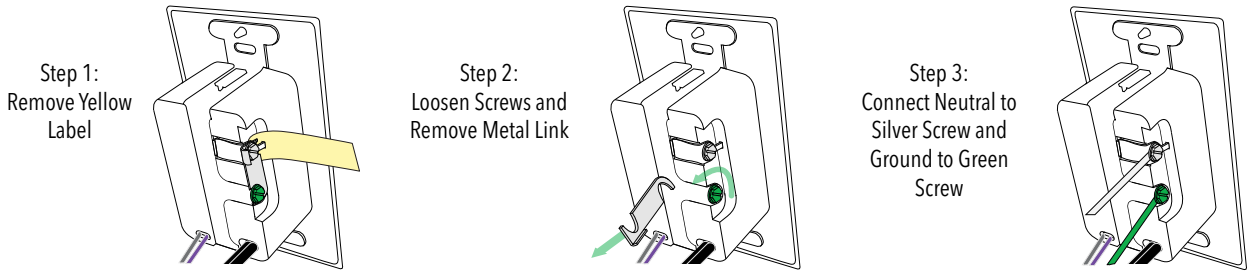
Note:

1. Max Dim Level default set to 9.1VDC. Min Dim Level default set to 1.5VDC.
2. 3-way switching not supported.
3. Wall plated included for white or ivory only for 347 VAC units.
4. Matching wall plate provided for 120/277 VAC units.
5. Special Order.
6. For setting other than default, minimum order quantity of 30 units.

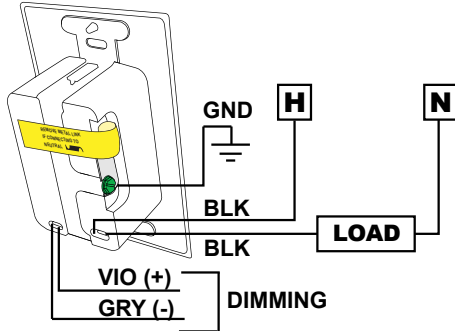
WIRING

CONVERSION FROM GROUND ONLY (NO NEUTRAL) TO NEUTRAL WIRING

This product is pre-configured for wiring without a neutral; however, if connection to neutral is required by code, the unit easily converts in seconds.



WIRING TO GROUND (NO NEUTRAL)

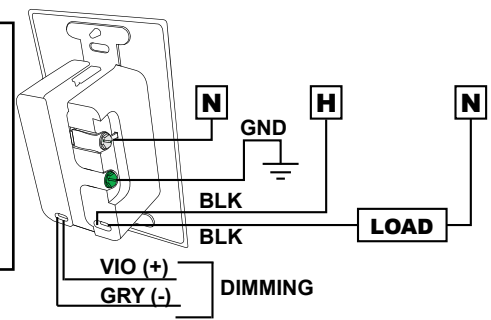


WIRE COLOR KEY

120/277 VAC WIRING
 BLACK* - Line Input } *BLACK wires can be reversed
 BLACK* - Load Output }
 VIOLET - Low Voltage Dim Output (0-10 VDC)
 GRAY - Low Voltage Common

347 VAC WIRING (-347 Option)
 Red wires replace Black wires.

WIRING TO NEUTRAL



NOTES:

- Per NEC requirements, the 0-10V violet and gray wires must be installed as Class One.
- The 0-10V control wires must not exceed 250 ft (76 m) in length and must be sized at no less than 20 AWG.

OPERATIONAL SETTINGS

2= Time Out

Time after which light will turn Off. One minute prior to expiration, LED on dimmer will begin blinking and the light level in the space will adjust to 3 VDC.

- 1 = Off* 5 = 60.0 min 9 = 720.0 min
- 2 = 10.0 min 6 = 90.0 min
- 3 = 15.0 min 7 = 120.0 min
- 4 = 30.0 min 8 = 180.0 min

9= Restore Defaults

Returns all functions to original settings.

- 1 - Maintain Current*
- 2 - Restore Defaults

15= Dimming Range Max (High Trim)

The maximum output level of the sensor.

- 1 - 0 VDC 5 - 3 VDC 9 - 7 VDC 13 - 10 VDC*
- 2 - 1 VDC 6 - 4 VDC 10 - 8 VDC
- 3 - 1.5 VDC 7 - 5 VDC 11 - 9 VDC
- 4 - 2 VDC 8 - 6 VDC 12 - 9.1 VDC**

**Default for EZ option

16 = Dimming Range Min (Low Trim)

The minimum output level of the sensor.

- 1 - 0 VDC 5 - 3 VDC 9 - 7 VDC 13 - 10 VDC
- 2 - 1 VDC* 6 - 4 VDC 10 - 8 VDC
- 3 - 1.5 VDC** 7 - 5 VDC 11 - 9 VDC
- 4 - 2 VDC 8 - 6 VDC 12 - 9.1 VDC

**Default for EZ option

19 = Fade On Rate

Time required for light to reach preset level.

- 1 - 0.75 sec* 3 - 5 sec
- 2 - 2.5 sec 4 - 15 sec

20 = Fade Off Rate

Time required for light to turn Off.

- 1 - 0.75 sec 3 - 5 sec
- 2 - 2.5 sec* 4 - 15 sec

21= Start Level

Level of light output when switched on.

- 1 - 10% 5 - 50% 9 - 90%
- 2 - 20% 6 - 60% 10 - 100%*
- 3 - 30% 7 - 70%
- 4 - 40% 8 - 80%

* Default Setting

SPECIFICATIONS

Electrical

Input Ratings 12-24VAC/VDC, 5mA

Output Ratings Sinks <20mA
- 800 W @ 120VAC
- 1200 W @ 277VAC
- 1500 W @ 347VAC

Mechanical

Dimensions 2.74"H x 1.68"W x 1.63"D (70mm x 43mm x 41mm) - does not include ground strap

Mounting Single-Gang Box or Low Voltage Ring

Connection Type Low Voltage Leads

Environmental

Warrantied Operating Temperature -22°F to 185°F (-30°C to 85°C)

Relative Humidity Up to 90%, Non-Condensing

Standards/ Ratings RoHS

General

Standards/ Ratings CEC Title 20

PROGRAMMING INSTRUCTIONS

Operational settings can be changed via the push-button sequence outlined below (note the example used is for changing the Low Trim setting).

