



| | |
|----------------|------|
| Catalog Number | |
| Project | Type |

FEATURES & SPECIFICATIONS

APPLICATION — The Cutlass Series of high output LED luminaires are designed for new outdoor parking area lighting and to be a replacement for HID area lights. They are optimal for lighting applications where long life, low maintenance, and consistent color rendering is required. The high efficient/lumen output allows the fixture to be used for parking, restaurant, quick service, shopping centers, or general area lighting applications.

CONSTRUCTION — The heavy-duty housing is constructed of cast aluminum with heat dissipating fins. The optical assemblies are sealed in place using a silicone gasket for weather tight protection. ETL listed for wet locations (IP65). Each fixture can accommodate advanced wireless control, management and reporting systems for outdoor lighting when ordered with the optional accessories (verify compatibility if using controls supplied by others) such as CTLARM mounting (required).

FINISH — A corrosion-resistant epoxy E-Coat layer that forms a uniform and all-encompassing protective barrier is applied to the fixtures prior to electrostatically applying a super durable powder coat finish. Standard colors available: Black, Bronze, US Green, White. Custom colors available upon request.

OPTICAL SYSTEM — Made with a state of the art UV stabilized acrylic high performance refractive optical assemblies that use high transmittance materials to achieve precise photometric distributions. Available in Type II, III, IV, Automotive Frontline Wide, IV Tennis, V Medium and V Wide beam configurations. Star Light Friendly (meets or exceeds Dark Sky requirements) in the horizontal position. Full Cutoff Luminaire.

ELECTRICAL SYSTEM — Available in up to 45,000 LED lumens in most optical distributions with either 5000K Cool White (+/- 500K), 4000K Neutral White or 3000K Warm White color temperatures. LED's rated for over 100,000 hours at 55°C ambient temperature. Available with 120-277V 50/60 Hz power supply. 480V and 347V input option or 0-10V dimming. Built-in surge protection up to 10 kV. Built-in Active PFC Function LED driver conforms to UL8750 standards.

ORDERING INFORMATION

Choose the bold face options for the appropriate luminaire configuration for your application and enter on the line above each fixture attribute. Accessories may be factory installed, depending on the particular accessory chosen, but still be ordered as a separate line item.

| CTL | | | | | | | |
|--------|--|-----------|--|---|---|--|--|
| SERIES | COLOR TEMP | | NOMINAL LUMENS | OPTICS | VOLTAGE | FINISH | OPTIONS |
| | C = Cool White (5000K) N = Neutral White (4000K) W = Warm White (3000K) | 2 Modules | 5L = 5,000 Lumens 8L = 8,000 Lumens 10L = 10,000 Lumens 12L = 12,000 Lumens 15L = 15,000 Lumens 20L = 20,000 Lumens | T2 = Type II T3 = Type III T4 = Type IV FAW = Frontline Auto Wide T4T = Type IV Tennis T5M = Type V Medium T5W = Type V Wide | 1 = Multi-Volt ¹ 2 = 347-480V(HV) | BZ = Bronze BK = Black GR = US Green WH = White SP = Special ² | PCR7 ⁵ = 7 Pin Twist-Lock Photocell Receptacle ANSI C136.41 & Receptacle Shorting Cap 2AF ^{6,7} = 2" Adjustable Slip Fitter DLP ⁹ = Dimming Leads Pulled HOEB ¹⁰ = LED Battery Pack, 90 mins |
| | | 4 Modules | 25L = 25,000 Lumens 30L = 30,000 Lumens 35L = 35,000 Lumens 40L = 40,000 Lumens 45L ⁸ = 45,000 Lumens | | | | CTL ARM IMS ^{9,11} = Arm with Integrated PIR Motion Sensor For Square Pole CTL ARM R IMS ^{9,11} = Arm with Integrated PIR Motion Sensor For Round Pole <i>(IMS Lenses Below, Ordered As A Separate Line Item)</i> TLWSFSP-L2 ¹² = 360° lens, maximum coverage: 48ft diameter from 8ft height TLWSFSP-L3 ¹² = 360° lens, maximum coverage: 40ft diameter from 20ft height TLWSFSP-L7 ¹² = 360° lens, maximum coverage: 100ft diameter from 40ft height |

| FIXTURE WEIGHTS (APPROX) | | |
|--------------------------|---------------|---------------|
| Fixture Configuration | 2 Module | 4 Module |
| Weight (lbs) | 14 lbs | 20 lbs |

ACCESSORIES

(Order as separate line items. Specify finish for accessories.)

- PC2** 480V Twist-Lock Photocell
 - PC7** Multi-Tap (105-285V) Twist-Lock Photocell
 - CTLISM**^{3,6} Slide Mount Adaptor
 - CTLB15**⁷ Adjustable Yoke Mount with Slide Adaptor
 - CTL ARM**⁸ Decorative Arm Mount (0.3 EPA, 3.5 lbs)
 - CTL ARM R**⁸ Decorative Arm Mount for Round Poles (0.3 EPA, 3.7 lbs)
 - S215**⁴ Angled Back Light Shield
 - CTLHT238** Horizontal 2-3/8" OD Tenon Mount
 - VBWM** Wall Mount Adaptor
 - TLWSFIR-100** Remote Handheld Configurator Tool for IMS Sensors
- MOUNTING OPTIONS** See page 3



DLC DesignLights Consortium® Qualified. Please go to www.designlights.org for the current Qualified Products List. Further details about qualified models may be found under Family Models.

CTL SERIES

High Lumen Output Cutlass LED Area Light



Picture shows:
CTL 45L w/ CTLARM

| SERIES | HOUSING HEIGHT | LENGTH & WIDTH | EPA (FT ²) |
|------------|----------------|-----------------|------------------------|
| CTL | 4.44" | 17.25" x 12.00" | See Chart |

MOUNTING — Proprietary slide-on mounting system allows for quick installation. The CTL can be ordered with an aesthetically pleasing arm mount (CTLARM – required for integrating dynamic control systems), a 2" adjustable slip fitter (CTL2AF) for mounting on a standard 2-3/8" OD tenon and an entire compliment of pole brackets with integrated quick mount technology. CTLISM for direct mounting to poles in single(1 @ 90°) or D180 (2 @ 180°).

LISTINGS — Complies with UL8750. ETL listed for wet locations. Meets US and Canadian safety standards. -40°C to 50°C ambient operation. RoHS Compliant.

WARRANTY — The complete luminaire is covered by a 5-year limited warranty.

EXAMPLE:

CTL C 45L T5M 1 BZ

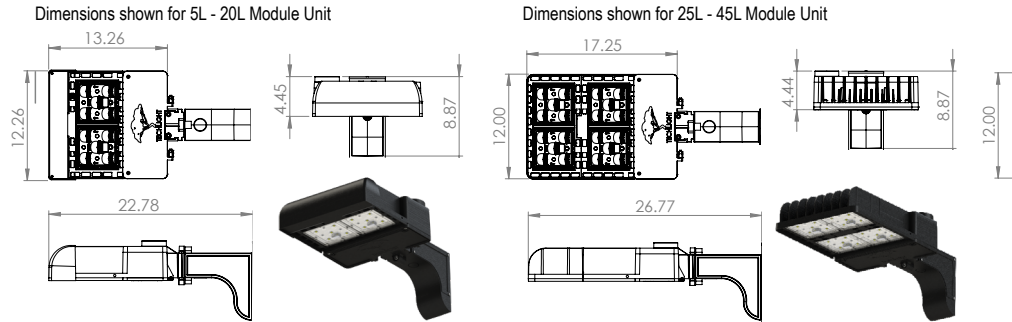
NOTES

- ¹ = Multi-Volt is an auto ranging power supply from 100V to 300V input.
- ² = Custom RAL color matching is available. Contact your sales representative for additional info.
- ³ = Slide mount adaptor for direct pole mounts cannot be used when mounting fixtures at 90° increments.
- ⁴ = Requires one S215 for 5L-20L units; two S215 for 25L-45L units.
- ⁵ = PCR7 photocell receptacle must be oriented in the field so that the light sensor on the control is facing North. When used with the CTL2AF, the fixture must be in a downward facing position (<90° tilt). Use of the PCR7 with a fixture in an upward facing position will void warranty.
- ⁶ = Accessory mounting device must be ordered for each cutlass luminaire to provide mounting means.
- ⁷ = Do not tilt the CTL more than 75 degrees upward from horizontal when using the CTL2AF & CTLB15.
- ⁸ = Only available in certain optics and wattages. See LUMINAIRE CHARACTERISTICS chart for details.
- ⁹ = DLP Option Required for Arms with Integrated IMS Motion Sensors.
- ¹⁰ = Only available in 5L, 8L, 10L, 12L and 15L.
- ¹¹ = TLWSFSP-L2, L3, or L7 Lens must be ordered along with Arms with Integrated PIR Motion Sensors.
- ¹² = Photo control shield available upon request. Lens must be ordered with IMS option.
- ¹³ = WHBL1 Lens must be ordered along with Arms with Integrated PIR Motion Sensors.
- ¹⁴ = See pg. 5 for specific CTLTH configurations and TH spec sheet for specifications.

CTL High Lumen Output Cutlass LED Area Light

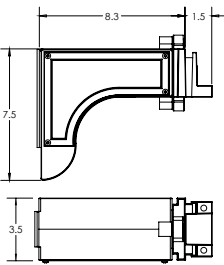
AVAILABLE FIXTURE DIMENSIONS

Dimensions shown are for fixture bodies only. Mounting options must be ordered separately. Fixture shown with arm sold separately.

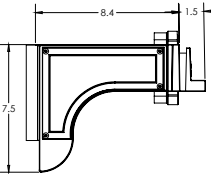


FIXTURE & MOUNTING ACCESSORIES

CTLARM⁵ (FOR SQUARE POLE)
Decorative Arm Mount (0.3 EPA, 3.5 lbs.) with Slide Mount Adapter



CTLARMR (FOR ROUND POLE)
Decorative Arm Mount (0.3 EPA, 3.5 lbs.) with Slide Mount Adapter



PC2
480V Twist-Lock Photocell



PC7
Multi-Tap (105-285V) Twist-Lock Photocell



PCR7⁵
7-Pin Twist-Lock Photocell Receptacle ANSI C136.41 and Receptacle Shorting Cap



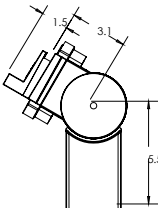
S215⁴
Angled Back Light Shield



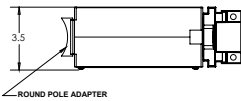
IMSBTM^{9,13}
AC Powered Internal Network Wireless PIR & Daylight Harvesting Sensor



CTL2AF⁷
2" Adjustable Slip Fitter with Slide Mount Adapter



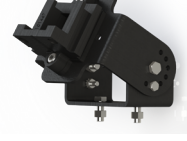
VBWM
Wall Mount Adaptor



CTL5M^{3,6}
Slide Mount Adaptor for square pole mount only



CTLB15⁷
Adjustable Yoke Mount with Slide Adaptor



WHBL1
360° PIR lens, maximum coverage 80" dia. from 40' height



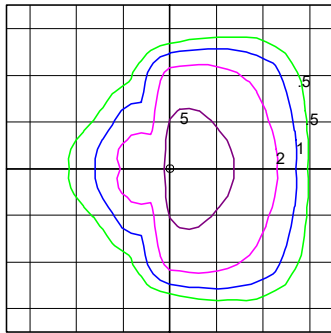
CTLHT238
Horizontal 2-3/8" OD Tenon Mount w/Slide Mount Adaptor



PHOTOMETRICS

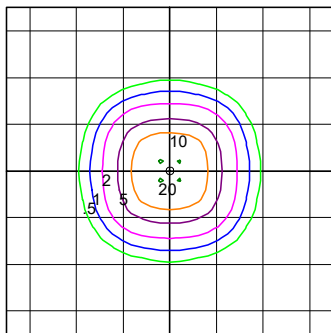
IES INDOOR REPORT PHOTOMETRIC FILE

Typical Type III photometric optical distribution



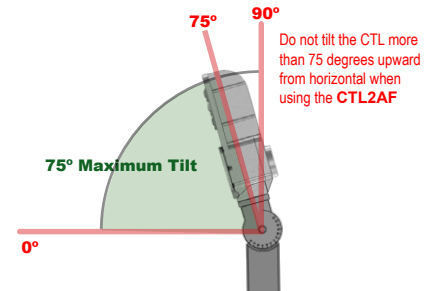
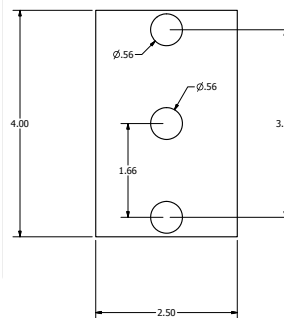
IES INDOOR REPORT PHOTOMETRIC FILE

Typical Type 5M photometric optical distribution



DRILL TEMPLATE

CTL - Not to Scale



TECHLIGHT
INNOVATION IN ILLUMINATION

2707 SATSUMA DR. | DALLAS, TX 75229 | PH: 800.225.0727 | www.techlight.com

CTL High Lumen Output Cutlass LED Area Light

EPA RATINGS (ft²)

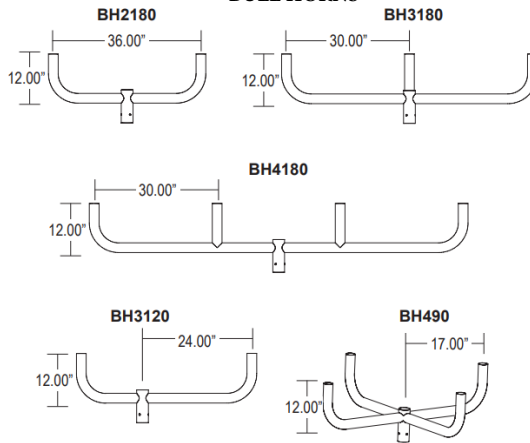
| | Angle ⁷ | FRONT | SIDE | EPA at 60 | TVAX | TV2 | TV3 | TV3120 | TV4 | TVC4 | BH2180 | BH3180 | BH3120 | BH4180 | BH490 | TVAXR | RV2 | RV3 | RV3120 | RV4 | RVC4 |
|---------------------|--------------------|-------|------|-----------|------|-----|-----|--------|-----|------|--------|--------|--------|--------|-------|-------|-----|-----|--------|-----|------|
| CUTLASS 2 MODULE | 0 | 0.38 | 0.44 | 0.44 | 0.5 | 1.9 | 3.1 | 2.3 | 4.3 | 3 | 1.4 | 2.1 | 1.8 | 3 | 2.3 | 0.5 | 1.3 | 2.1 | 1.7 | 2.9 | 2.2 |
| | 20 | 0.63 | 0.44 | 0.6 | 0.7 | 2.2 | 3.7 | 2.8 | 5.1 | 3.4 | 1.7 | 2.7 | 2.4 | 3.7 | 2.8 | 0.7 | 1.7 | 2.7 | 2.3 | 3.6 | 2.7 |
| | 30 | 0.76 | 0.44 | 0.66 | 0.8 | 2.5 | 4.1 | 3.1 | 5.6 | 3.7 | 2 | 3.1 | 2.6 | 4.3 | 3.1 | 0.8 | 2 | 3.1 | 2.5 | 4.2 | 3 |
| | 45 | 0.94 | 0.44 | 0.75 | 1 | 2.9 | 4.6 | 3.5 | 6.3 | 4.1 | 2.4 | 3.6 | 3 | 5 | 3.5 | 1 | 2.3 | 3.6 | 2.9 | 4.9 | 3.3 |
| CUTLASS 4 MODULE | 0 | 0.38 | 0.57 | 0.54 | 0.6 | 2.1 | 3.5 | 2.5 | 4.9 | 3.2 | 1.6 | 2.5 | 2 | 3.5 | 2.6 | 0.6 | 1.6 | 2.5 | 1.9 | 3.4 | 2.5 |
| | 20 | 0.75 | 0.57 | 0.75 | 0.8 | 2.5 | 4 | 3.3 | 5.6 | 4 | 2 | 3 | 2.8 | 4.2 | 3.4 | 0.8 | 1.9 | 3 | 2.7 | 4.1 | 3.2 |
| | 30 | 0.95 | 0.57 | 0.85 | 1 | 2.9 | 4.6 | 3.7 | 6.4 | 4.3 | 2.4 | 3.6 | 3.2 | 5 | 3.7 | 1 | 2.3 | 3.6 | 3.1 | 4.9 | 3.6 |
| | 45 | 1.19 | 0.57 | 0.97 | 1.2 | 3.4 | 5.4 | 4.1 | 7.3 | 4.8 | 2.9 | 4.4 | 3.7 | 6 | 4.2 | 1.2 | 2.8 | 4.3 | 3.6 | 5.9 | 4.1 |

7 = Do not tilt the CTL more than 45 degrees upward from horizontal when using the CTL2AF & CTLB15

SQUARE STRAIGHT BULL HORNS



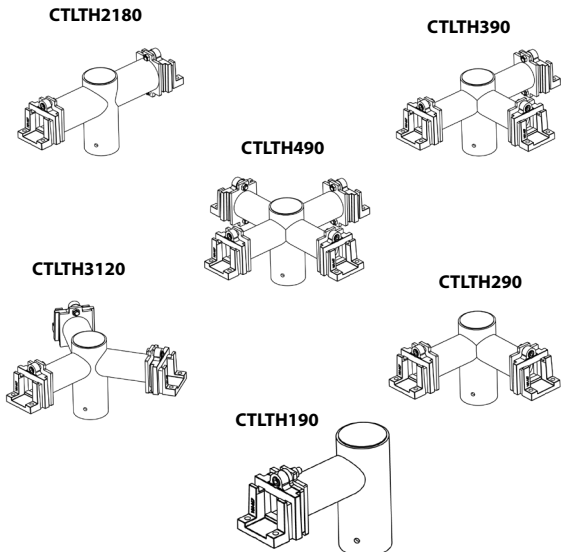
ROUND CURVED BULL HORNS



ROUND STRAIGHT BULL HORNS



HORIZONTAL TENON ADAPTORS w/Slide Mount Adaptor



ARM MOUNT

| Fixture Configuration | 2 Module EPA's ¹¹ | 4 Module EPA's ¹¹ |
|-----------------------|------------------------------|------------------------------|
| | CTLARM | |
| 1 @ 90° | 0.8 | 0.9 |
| 2 @ 180° | 1.5 | 1.7 |
| 2 @ 90° | 1.4 | 1.5 |
| 3 @ 90° | 2.1 | 2.3 |
| 4 @ 90° or 4 @ 70° | 2.2 | 2.5 |

¹¹ EPA's shown include both the fixture and the mounting apparatus.



TECHLIGHT
INNOVATION IN ILLUMINATION

2707 SATSUMA DR. | DALLAS, TX 75229 | PH: 800.225.0727 | www.techlight.com

CTL High Lumen Output Cutlass LED Area Light

FIXTURE MOUNT SENSOR (IMS)

FEATURES & SPECIFICATIONS

APPLICATION — The sensor is ideal for areas such as parking facilities, gas stations, pedestrian pathways, and warehouses. A choice of four lenses ensures complete coverage for mounting heights up to 40'.

OPERATION — Typically, the sensor ramps lighting On to the selected High mode level when motion is detected and the ambient light level is below the hold off setpoint. After the sensor stops detecting movement and the time delay elapses, lights fade to the Low mode level. If there is no motion during the subsequent cut off time delay, the lights will turn Off. For dusk to dawn control, the integral photocell can switch the lights On and Off based on the ambient light level so that lighting remains on overnight even without motion detection.

FEATURES —

- Provides line voltage On/Off switching
- High and low modes fully adjustable from 0 to 10V
- Time delay from 5 to 30 minutes
- Optional cut off delay
- Adjustable ramp up and fade down times
- Optional daylighting setpoints feature automatic calibration, or permit manual adjustment
- Polycarbonate construction; flame retardant, UV resistant, impact resistant, recyclable
- UL244A and UL508

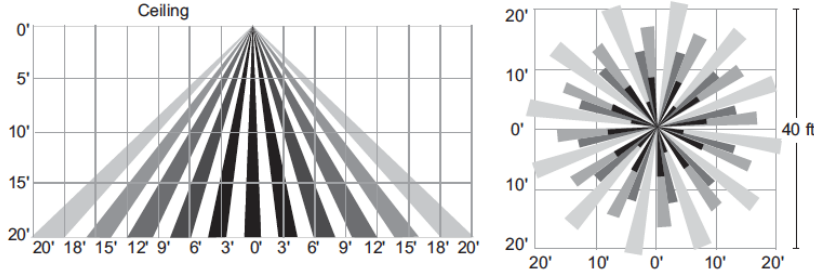
TLWSFSIR-100
Remote Handheld Sensor
Configuration Tool



SENSOR LENSES FIELD OF VIEW

TLWSFSP-L3¹²

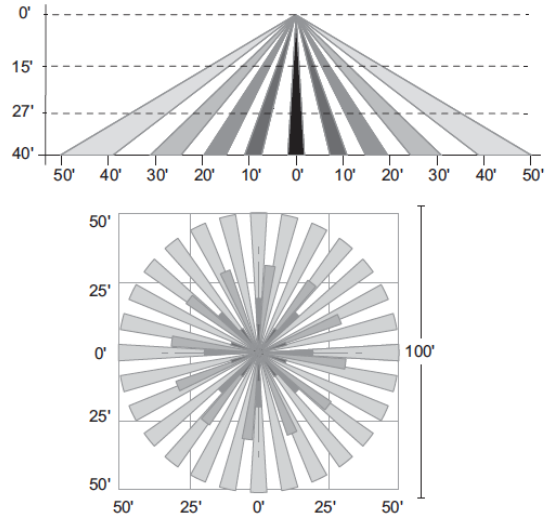
360° lens, maximum coverage 40' diameter from 20' height



¹² = Black lens cover and Photo control shield available upon request.
Len's must be ordered with IMS option.

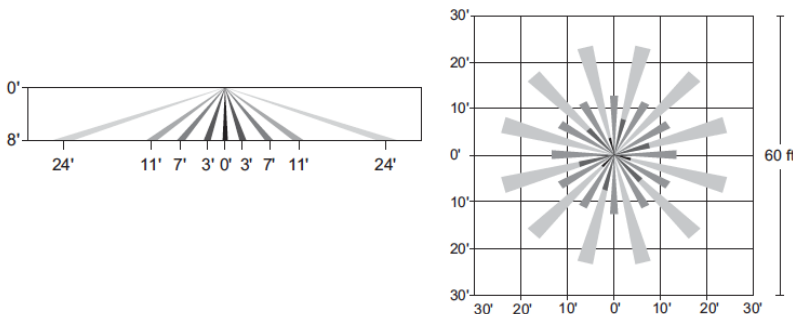
TLWSFSP-L7¹²

360° lens, maximum coverage 100' diameter from 40' height



TLWSFSP-L2¹²

360° lens, maximum coverage 48' diameter from 8' height



CTL High Lumen Output Cutlass LED Area Light

Integral Motion Sensor Blue Tooth Module (IMSBTM)

APPLICATION — The IMSBTM is an AC-powered, Integral Motion Sensor Blue Tooth Module, that is highly versatile for various indoor and outdoor lighting fixtures. It provides **360° coverage**, making it optimal for open spaces and aiseways. This sensor is particularly suitable for environments such as parking lots, fuel stations, walkways, and storage facilities. The WHBL1 lens is crafted for fixtures at mounting heights ranging from **20 to 40 feet**, ensuring a coverage span of up to **80 feet in diameter** at the maximum height of **40 feet**. These lenses are designed with multiple cells and tiers, creating a dense pattern of coverage.

- Analog Sensor Built-in
- Replaceable lens options
- 120-277V Line Voltage input
- Daylight harvesting available

OPERATION — Typically, the sensor ramps lighting On to the selected High mode level when motion is detected and the ambient light level is below the hold off setpoint. After the sensor stops detecting movement and the time delay elapses, lights fade to the Low mode level. If there is no motion during the subsequent cut off time delay, the lights will turn Off. For dusk to dawn control, the integral photocell can switch the lights On and Off based on the ambient light level so that lighting remains on overnight even without motion detection.

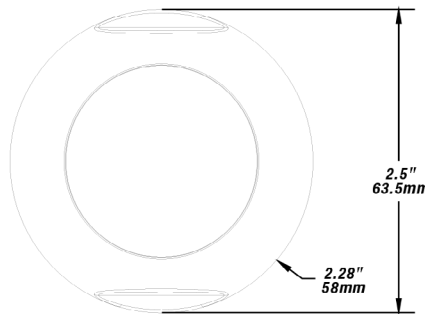
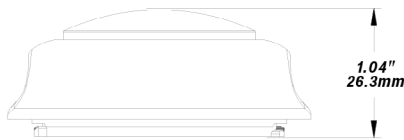
ADDITIONAL FEATURES

- **Wireless Control System:** Bluetooth® Low Energy Mesh 4.2 & 5.0 protocols. Enables individual or group control of luminaires.
- **Mobile App Operation:** Intuitive interface for easy management.
- **Flexible Commissioning:** Components commissioned via the Mobile App. No need for a gateway during commissioning.
- **Sensor Integration:** Works seamlessly with various sensors. Enhances energy efficiency and responsive lighting.
- **Mesh Network Range:** Wireless communication up to 100 feet or more between devices. Ideal for diverse spatial configurations.
- **Internet Independence:** Commissioning and operation without internet access. Ensures functionality in various environments.
- **Security Measures:** Data encryption for mesh network security. Device access restricted without encrypted QR codes.
- **UL 1376 Verification:** LiteTrace, the manufacturer, has UL 1376 verification. Ensures adherence to stringent security standards.
- **In-House R&D Capabilities:** Full-stack, in-house R&D for networked sensors and controllers. Reflects a high level of control and innovation.
- **Industry Recognition:** One of the first systems listed to DLC's Networked Lighting Controls (NLC5). Compliance with industry standards and specifications.

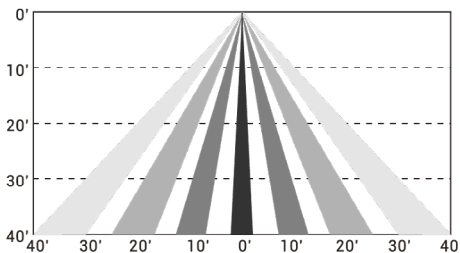


SENSOR LENS FIELD OF VIEW AND DIMENSIONS

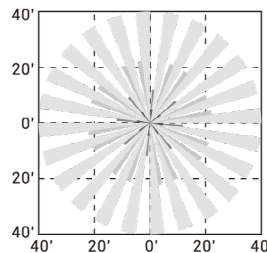
WHBL1



Coverage Side View

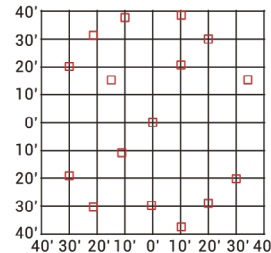


Coverage Top View



Height 40ft

Detecting Spots For Ref



Network Lighting Control App Instruction Manual

located on the Techlight Website -> Resources Page.
Location shown below, **or** scan the QR code to the right.
<https://techlight.com/pdf/KeiltonManual.pdf>



CTL High Lumen Output Cutlass LED Area Light

LUMINAIRE CHARACTERISTICS

| System Wattage | L70 @ 55°C | Amperage Draw | | | | | |
|----------------|------------|---------------|------|------|------|------|------|
| | | 120V | 208V | 240V | 277V | 347V | 480V |
| 35 | >100K | 0.29 | 0.17 | 0.14 | 0.13 | 0.10 | 0.07 |
| 47 | >100K | 0.39 | 0.22 | 0.19 | 0.17 | 0.13 | 0.10 |
| 53 | >100K | 0.44 | 0.25 | 0.22 | 0.19 | 0.15 | 0.11 |
| 59 | >100K | 0.49 | 0.28 | 0.25 | 0.21 | 0.17 | 0.12 |
| 65 | >100K | 0.54 | 0.31 | 0.27 | 0.24 | 0.19 | 0.14 |
| 71 | >100K | 0.60 | 0.34 | 0.30 | 0.26 | 0.21 | 0.15 |
| 78 | >100K | 0.65 | 0.37 | 0.32 | 0.28 | 0.22 | 0.16 |
| 79 | >100K | 0.66 | 0.38 | 0.33 | 0.28 | 0.23 | 0.16 |
| 83 | >100K | 0.70 | 0.40 | 0.35 | 0.30 | 0.24 | 0.17 |
| 88 | >100K | 0.73 | 0.42 | 0.37 | 0.32 | 0.25 | 0.18 |
| 92 | >100K | 0.77 | 0.44 | 0.39 | 0.33 | 0.27 | 0.19 |
| 97 | >100K | 0.81 | 0.47 | 0.40 | 0.35 | 0.28 | 0.20 |
| 102 | >100K | 0.85 | 0.49 | 0.42 | 0.37 | 0.29 | 0.21 |
| 106 | >100K | 0.88 | 0.51 | 0.44 | 0.38 | 0.31 | 0.22 |
| 111 | >100K | 0.92 | 0.53 | 0.46 | 0.40 | 0.32 | 0.23 |
| 129 | >100K | 1.08 | 0.62 | 0.54 | 0.47 | 0.37 | 0.27 |
| 134 | >100K | 1.11 | 0.64 | 0.56 | 0.48 | 0.39 | 0.28 |
| 138 | >100K | 1.15 | 0.66 | 0.58 | 0.50 | 0.40 | 0.29 |
| 143 | >100K | 1.19 | 0.69 | 0.6 | 0.52 | 0.41 | 0.30 |
| 147 | >100K | 1.23 | 0.71 | 0.61 | 0.53 | 0.42 | 0.31 |
| 149 | >100K | 1.24 | 0.72 | 0.62 | 0.54 | 0.43 | 0.31 |
| 157 | >100K | 1.31 | 0.75 | 0.65 | 0.57 | 0.45 | 0.33 |
| 158 | >100K | 1.32 | 0.76 | 0.66 | 0.57 | 0.45 | 0.33 |
| 167 | >100K | 1.39 | 0.80 | 0.70 | 0.60 | 0.48 | 0.35 |
| 176 | >100K | 1.47 | 0.85 | 0.73 | 0.64 | 0.51 | 0.37 |
| 185 | >100K | 1.54 | 0.89 | 0.77 | 0.67 | 0.53 | 0.39 |
| 194 | >100K | 1.62 | 0.93 | 0.81 | 0.70 | 0.56 | 0.40 |
| 203 | >100K | 1.69 | 0.98 | 0.85 | 0.73 | 0.59 | 0.42 |
| 212 | >100K | 1.77 | 1.02 | 0.88 | 0.77 | 0.61 | 0.44 |
| 221 | >100K | 1.85 | 1.06 | 0.92 | 0.8 | 0.64 | 0.46 |
| 231 | >100K | 1.92 | 1.11 | 0.96 | 0.83 | 0.66 | 0.48 |
| 240 | >100K | 2.00 | 1.15 | 1.00 | 0.87 | 0.69 | 0.50 |
| 249 | >100K | 2.07 | 1.20 | 1.04 | 0.90 | 0.72 | 0.52 |
| 258 | >100K | 2.15 | 1.24 | 1.08 | 0.93 | 0.74 | 0.54 |
| 267 | >100K | 2.23 | 1.29 | 1.11 | 0.97 | 0.77 | 0.56 |
| 277 | >100K | 2.30 | 1.33 | 1.15 | 1.00 | 0.80 | 0.58 |
| 286 | >100K | 2.38 | 1.37 | 1.19 | 1.03 | 0.82 | 0.60 |
| 295 | >100K | 2.46 | 1.42 | 1.23 | 1.06 | 0.85 | 0.61 |
| 304 | >100K | 2.53 | 1.46 | 1.27 | 1.10 | 0.88 | 0.63 |
| 305 | >100K | 2.54 | 1.47 | 1.27 | 1.10 | 0.88 | 0.63 |
| 313 | >100K | 2.61 | 1.51 | 1.31 | 1.13 | 0.90 | 0.65 |
| 318 | >100K | 2.65 | 1.53 | 1.33 | 1.15 | 0.92 | 0.66 |
| 322 | >100K | 2.69 | 1.55 | 1.34 | 1.16 | 0.93 | 0.67 |



TECHLIGHT
INNOVATION IN ILLUMINATION

2707 SATSUMA DR. | DALLAS, TX 75229 | PH: 800.225.0727 | www.techlight.com

CTL High Lumen Output Cutlass LED Area Light

LUMINAIRE CHARACTERISTICS

Cool White (5000K)

| Angled Back Light Shield | Output ID | Nominal Lumens | TYPE FAW | | | TYPE II | | | TYPE III | | | TYPE IV | | | TYPE 4T | | | TYPE 5M | | | TYPE 5W | | |
|---------------------------------------|--------------------------|----------------|---------------|--------------|----------|---------------|--------------|----------|---------------|--------------|----------|---------------|--------------|----------|---------------|--------------|----------|--------------|--------------|----------|---------------|--------------|------|
| | | | System Lumens | System Watts | Lm/W | System Lumens | System Watts | Lm/W | System Lumens | System Watts | Lm/W | System Lumens | System Watts | Lm/W | System Lumens | System Watts | Lm/W | System Lumen | System Watts | Lm/W | System Lumens | System Watts | Lm/W |
| | | | BUG Rating | | | BUG Rating | | | BUG Rating | | | BUG Rating | | | BUG Rating | | | BUG Rating | | | BUG Rating | | |
| Requires one S215 for 5L - 20L Units | 5L | 5,000 | 5012 | 35 | 145 | 5525 | 35 | 160 | 5126 | 35 | 148 | 5557 | 35 | 160 | 5723 | 35 | 165 | 5663 | 35 | 164 | 5702 | 35 | 165 |
| | Bug Rating | | B1-U0-G1 | | | B1-U0-G1 | | | B1-U0-G1 | | | B2-U0-G2 | | | B2-U0-G1 | | | B2-U0-G0 | | | B3-U0-G1 | | |
| | 8L | 8,000 | 8206 | 59 | 139 | 8200 | 53 | 155 | 8392 | 59 | 142 | 8247 | 53 | 156 | 8495 | 53 | 161 | 8405 | 53 | 159 | 8463 | 53 | 160 |
| | Bug Rating | | B2-U0-G2 | | | B2-U0-G2 | | | B2-U0-G2 | | | B2-U0-G2 | | | B2-U0-G1 | | | B3-U0-G0 | | | B3-U0-G2 | | |
| | 10L | 10,000 | 10393 | 78 | 134 | 9864 | 65 | 151 | 9912 | 71 | 139 | 9920 | 65 | 152 | 10218 | 65 | 157 | 10110 | 65 | 155 | 10179 | 65 | 156 |
| | Bug Rating | | B2-U0-G2 | | | B2-U0-G2 | | | B2-U0-G2 | | | B2-U0-G2 | | | B3-U0-G1 | | | B3-U0-G0 | | | B4-U0-G2 | | |
| | 12L | 12,000 | 11808 | 83 | 142 | 11455 | 78 | 147 | 11753 | 79 | 149 | 11521 | 78 | 148 | 11867 | 78 | 153 | 11742 | 78 | 151 | 11822 | 78 | 152 |
| Bug Rating | | B2-U0-G2 | | | B2-U0-G2 | | | B2-U0-G2 | | | B3-U0-G3 | | | B3-U0-G1 | | | B3-U0-G0 | | | B4-U0-G2 | | | |
| Requires two S215 for 25L - 40L Units | 15L | 15,000 | 15084 | 111 | 136 | 15177 | 97 | 156 | 15265 | 106 | 144 | 15216 | 97 | 157 | 15207 | 92 | 164 | 15045 | 92 | 163 | 15017 | 92 | 162 |
| | Bug Rating | | B3-U0-G3 | | | B3-U0-G3 | | | B3-U0-G3 | | | B3-U0-G3 | | | B3-U0-G1 | | | B3-U0-G1 | | | B4-U0-G2 | | |
| | 20L | 20,000 | 20096 | 157 | 128 | 19837 | 134 | 148 | 20082 | 147 | 136 | 19888 | 134 | 149 | 20146 | 129 | 156 | 19931 | 129 | 154 | 19894 | 129 | 154 |
| | Bug Rating | | B3-U0-G3 | | | B3-U0-G3 | | | B3-U0-G3 | | | B3-U0-G3 | | | B3-U0-G2 | | | B4-U0-G1 | | | B5-U0-G3 | | |
| | 25L | 25,000 | 24813 | 176 | 141 | 25139 | 158 | 159 | 24761 | 167 | 148 | 25204 | 158 | 160 | 24913 | 149 | 167 | 24647 | 149 | 166 | 24601 | 149 | 165 |
| | Bug Rating | | B3-U0-G3 | | | B3-U0-G3 | | | B3-U0-G4 | | | B3-U0-G4 | | | B4-U0-G2 | | | B4-U0-G1 | | | B5-U0-G3 | | |
| | 30L | 30,000 | 30167 | 221 | 136 | 30354 | 194 | 156 | 29456 | 203 | 145 | 30432 | 194 | 157 | 30415 | 185 | 164 | 30090 | 185 | 163 | 30034 | 185 | 162 |
| Bug Rating | | B3-U0-G3 | | | B3-U0-G3 | | | B3-U0-G4 | | | B3-U0-G4 | | | B4-U0-G2 | | | B5-U0-G1 | | | B5-U0-G4 | | | |
| 35L | 35,000 | 35380 | 267 | 132 | 35005 | 231 | 152 | 34967 | 249 | 140 | 35095 | 231 | 152 | 35370 | 221 | 160 | 34992 | 221 | 158 | 34928 | 221 | 158 | |
| Bug Rating | | B3-U0-G4 | | | B4-U0-G4 | | | B3-U0-G4 | | | B3-U0-G4 | | | B4-U0-G2 | | | B5-U0-G1 | | | B5-U0-G4 | | | |
| 40L | 40,000 | 40193 | 313 | 128 | 39674 | 267 | 148 | 40164 | 295 | 136 | 39777 | 267 | 149 | 40292 | 258 | 156 | 39861 | 258 | 154 | 39788 | 258 | 154 | |
| Bug Rating | | B3-U0-G4 | | | B4-U0-G4 | | | B4-U0-G5 | | | B4-U0-G5 | | | B4-U0-G2 | | | B5-U0-G1 | | | B5-U0-G4 | | | |
| Requires 2 x S215 | 45L | 45,000 | N/A | | | 45070 | 313 | 144 | 43211 | 322 | 134 | 45187 | 313 | 144 | 44913 | 295 | 152 | 45547 | 304 | 150 | 45463 | 304 | 150 |
| | Bug Rating | | | | | B4-U0-G4 | | | B4-U0-G5 | | | B4-U0-G5 | | | B4-U0-G2 | | | B5-U0-G2 | | | B5-U0-G5 | | |
| | Angled Back Light Shield | | | | | 2 x S215 | | | 2 x S215 | | | 2 x S215 | | | 2 x S215 | | | 2 x S215 | | | 2 x S215 | | |



CTL High Lumen Output Cutlass LED Area Light

LUMINAIRE CHARACTERISTICS

Neutral White (4000K)

| Angled Back Light Shield | Output ID | Nominal Lumens | TYPE IAW | | | TYPE II | | | TYPE III | | | TYPE IV | | | TYPE 4T | | | TYPE 5M | | | TYPE 5W | | |
|---------------------------------------|--------------------------|----------------|---------------|--------------|----------|---------------|--------------|----------|---------------|--------------|----------|---------------|--------------|----------|---------------|--------------|----------|--------------|--------------|----------|---------------|--------------|------|
| | | | System Lumens | System Watts | Lm/W | System Lumens | System Watts | Lm/W | System Lumens | System Watts | Lm/W | System Lumens | System Watts | Lm/W | System Lumens | System Watts | Lm/W | System Lumen | System Watts | Lm/W | System Lumens | System Watts | Lm/W |
| | | | BUG Rating | | | BUG Rating | | | BUG Rating | | | BUG Rating | | | BUG Rating | | | BUG Rating | | | BUG Rating | | |
| Requires one S215 for 5L - 20L Units | 5L | 5,000 | 5136 | 35 | 148 | 5661 | 35 | 163 | 5253 | 35 | 152 | 5694 | 35 | 164 | 5865 | 35 | 169 | 5803 | 35 | 168 | 5843 | 35 | 169 |
| | Bug Rating | | B1-U0-G1 | | | B1-U0-G1 | | | B1-U0-G1 | | | B2-U0-G2 | | | B2-U0-G1 | | | B2-U0-G0 | | | B3-U0-G1 | | |
| | 8L | 8,000 | 8409 | 59 | 142 | 8402 | 53 | 159 | 7796 | 53 | 147 | 8451 | 53 | 160 | 7808 | 47 | 167 | 7726 | 47 | 165 | 7778 | 47 | 166 |
| | Bug Rating | | B2-U0-G2 | | | B2-U0-G2 | | | B2-U0-G2 | | | B2-U0-G2 | | | B2-U0-G1 | | | B3-U0-G0 | | | B3-U0-G2 | | |
| | 10L | 10,000 | 9931 | 71 | 139 | 10107 | 65 | 155 | 10156 | 71 | 142 | 10165 | 65 | 156 | 10470 | 65 | 160 | 10360 | 65 | 159 | 10431 | 65 | 160 |
| | Bug Rating | | B2-U0-G2 | | | B2-U0-G2 | | | B2-U0-G2 | | | B2-U0-G2 | | | B3-U0-G1 | | | B3-U0-G0 | | | B4-U0-G2 | | |
| | 12L | 12,000 | 11745 | 83 | 141 | 11738 | 78 | 151 | 12315 | 83 | 148 | 11805 | 78 | 152 | 12160 | 78 | 156 | 12032 | 78 | 155 | 12114 | 78 | 156 |
| Bug Rating | | B2-U0-G2 | | | B2-U0-G2 | | | B3-U0-G3 | | | B3-U0-G3 | | | B3-U0-G1 | | | B3-U0-G0 | | | B4-U0-G2 | | | |
| Requires two S215 for 25L - 40L Units | 15L | 15,000 | 15003 | 111 | 136 | 15096 | 97 | 156 | 15184 | 106 | 143 | 15135 | 97 | 156 | 15126 | 92 | 164 | 14965 | 92 | 162 | 14937 | 92 | 161 |
| | Bug Rating | | B2-U0-G3 | | | B3-U0-G3 | | | B3-U0-G3 | | | B3-U0-G3 | | | B3-U0-G1 | | | B3-U0-G1 | | | B4-U0-G2 | | |
| | 20L | 20,000 | 19989 | 157 | 128 | 20280 | 138 | 147 | 19975 | 147 | 135 | 19783 | 134 | 148 | 20039 | 129 | 155 | 19824 | 129 | 154 | 19788 | 129 | 153 |
| | Bug Rating | | B3-U0-G3 | | | B3-U0-G3 | | | B3-U0-G3 | | | B3-U0-G3 | | | B3-U0-G2 | | | B4-U0-G1 | | | B5-U0-G3 | | |
| | 25L | 25,000 | 24681 | 176 | 140 | 25005 | 158 | 158 | 24629 | 167 | 148 | 25070 | 158 | 159 | 24780 | 149 | 166 | 24516 | 149 | 165 | 24470 | 149 | 164 |
| | Bug Rating | | B3-U0-G3 | | | B3-U0-G3 | | | B3-U0-G4 | | | B3-U0-G4 | | | B4-U0-G2 | | | B4-U0-G1 | | | B5-U0-G3 | | |
| | 30L | 30,000 | 30007 | 221 | 136 | 30192 | 194 | 156 | 30368 | 212 | 143 | 30270 | 194 | 156 | 30253 | 185 | 164 | 29930 | 185 | 162 | 29874 | 185 | 161 |
| Bug Rating | | B3-U0-G3 | | | B3-U0-G3 | | | B4-U0-G4 | | | B4-U0-G4 | | | B4-U0-G2 | | | B5-U0-G1 | | | B5-U0-G4 | | | |
| Requires 2 x S215 | 35L | 35,000 | 35192 | 267 | 132 | 34818 | 231 | 151 | 34781 | 249 | 140 | 34908 | 231 | 151 | 35182 | 221 | 159 | 34806 | 221 | 157 | 34742 | 221 | 157 |
| | Bug Rating | | B3-U0-G4 | | | B4-U0-G4 | | | B4-U0-G4 | | | B4-U0-G4 | | | B4-U0-G2 | | | B5-U0-G1 | | | B5-U0-G4 | | |
| | 40L | 40,000 | 39979 | 313 | 128 | 39463 | 267 | 148 | 39950 | 295 | 135 | 39565 | 267 | 148 | 40077 | 258 | 155 | 39649 | 258 | 154 | 39576 | 258 | 153 |
| Bug Rating | | B4-U0-G4 | | | B4-U0-G4 | | | B4-U0-G5 | | | B4-U0-G5 | | | B4-U0-G2 | | | B5-U0-G1 | | | B5-U0-G4 | | | |
| Requires 2 x S215 | 45L | 45,000 | N/A | | | 45070 | 313 | 144 | 42883 | 322 | 133 | 45187 | 313 | 144 | 44913 | 295 | 152 | 45547 | 304 | 150 | 45463 | 304 | 150 |
| | Bug Rating | | N/A | | | B4-U0-G4 | | | B4-U0-G5 | | | B4-U0-G5 | | | B4-U0-G2 | | | B5-U0-G2 | | | B5-U0-G5 | | |
| | Angled Back Light Shield | | N/A | | | 2 x S215 | | | 2 x S215 | | | 2 x S215 | | | 2 x S215 | | | 2 x S215 | | | 2 x S215 | | |



CTL High Lumen Output Cutlass LED Area Light

LUMINAIRE CHARACTERISTICS

Warm White (3000K)

| Angled Back Light Shield | Output ID | Nominal Lumens | TYPE IAW | | | TYPE II | | | TYPE III | | | TYPE IV | | | TYPE 4T | | | TYPE 5M | | | TYPE 5W | | |
|---------------------------------------|--------------------------|----------------|---------------|--------------|----------|---------------|--------------|----------|---------------|--------------|----------|---------------|--------------|----------|---------------|--------------|----------|--------------|--------------|----------|---------------|--------------|------|
| | | | System Lumens | System Watts | Lm/W | System Lumens | System Watts | Lm/W | System Lumens | System Watts | Lm/W | System Lumens | System Watts | Lm/W | System Lumens | System Watts | Lm/W | System Lumen | System Watts | Lm/W | System Lumens | System Watts | Lm/W |
| | | | BUG Rating | | | BUG Rating | | | BUG Rating | | | BUG Rating | | | BUG Rating | | | BUG Rating | | | BUG Rating | | |
| Requires one S215 for 5L - 20L Units | 5L | 5,000 | 4782 | 35 | 138 | 4891 | 35 | 141 | 4891 | 35 | 141 | 5301 | 35 | 153 | 5461 | 35 | 158 | 5403 | 35 | 156 | 5440 | 35 | 157 |
| | Bug Rating | | B1-U0-G1 | | | B1-U0-G1 | | | B1-U0-G1 | | | B1-U0-G1 | | | B2-U0-G1 | | | B2-U0-G0 | | | B3-U0-G1 | | |
| | 8L | 8,000 | 7829 | 53 | 148 | 7823 | 53 | 148 | 8007 | 59 | 136 | 7868 | 53 | 149 | 8105 | 53 | 153 | 8019 | 53 | 152 | 8074 | 53 | 153 |
| | Bug Rating | | B2-U0-G2 | | | B2-U0-G2 | | | B2-U0-G2 | | | B2-U0-G2 | | | B2-U0-G1 | | | B3-U0-G0 | | | B3-U0-G2 | | |
| | 10L | 10,000 | 9915 | 71 | 139 | 10191 | 71 | 143 | 10141 | 78 | 130 | 10250 | 71 | 143 | 10558 | 71 | 148 | 10447 | 71 | 146 | 10518 | 71 | 147 |
| | Bug Rating | | B2-U0-G2 | | | B2-U0-G2 | | | B2-U0-G2 | | | B2-U0-G2 | | | B3-U0-G1 | | | B3-U0-G0 | | | B4-U0-G2 | | |
| | 12L | 12,000 | 11760 | 78 | 151 | 11915 | 79 | 151 | 12331 | 88 | 140 | 11946 | 79 | 151 | 11322 | 78 | 146 | 11203 | 78 | 144 | 11279 | 78 | 145 |
| Bug Rating | | B2-U0-G2 | | | B2-U0-G2 | | | B3-U0-G3 | | | B3-U0-G3 | | | B3-U0-G1 | | | B3-U0-G0 | | | B4-U0-G2 | | | |
| Requires two S215 for 25L - 40L Units | 15L | 15,000 | 15301 | 97 | 158 | 14931 | 102 | 147 | 14991 | 111 | 135 | 14970 | 102 | 147 | 15042 | 97 | 155 | 14881 | 97 | 153 | 14854 | 97 | 153 |
| | Bug Rating | | B3-U0-G3 | | | B3-U0-G3 | | | B3-U0-G3 | | | B3-U0-G3 | | | B3-U0-G1 | | | B3-U0-G1 | | | B4-U0-G2 | | |
| | 20L | 20,000 | 19488 | 138 | 141 | 19849 | 143 | 139 | 19974 | 157 | 128 | 19900 | 143 | 139 | 20207 | 138 | 146 | 19991 | 138 | 145 | 19954 | 138 | 144 |
| | Bug Rating | | B3-U0-G3 | | | B3-U0-G3 | | | B3-U0-G3 | | | B3-U0-G3 | | | B3-U0-G2 | | | B4-U0-G1 | | | B5-U0-G3 | | |
| | 25L | 25,000 | 24590 | 158 | 156 | 25102 | 167 | 150 | 24661 | 176 | 140 | 25167 | 167 | 151 | 24915 | 158 | 158 | 24649 | 158 | 156 | 24604 | 158 | 156 |
| | Bug Rating | | B3-U0-G3 | | | B3-U0-G3 | | | B3-U0-G4 | | | B3-U0-G4 | | | B4-U0-G2 | | | B4-U0-G1 | | | B5-U0-G3 | | |
| | 30L | 30,000 | 29590 | 194 | 152 | 29862 | 203 | 147 | 29983 | 221 | 135 | 29940 | 203 | 147 | 30084 | 194 | 155 | 29763 | 194 | 153 | 29708 | 194 | 153 |
| Bug Rating | | B3-U0-G3 | | | B3-U0-G3 | | | B4-U0-G4 | | | B4-U0-G4 | | | B4-U0-G2 | | | B5-U0-G1 | | | B5-U0-G4 | | | |
| Requires 2 x S215 | 35L | 35,000 | 35401 | 240 | 148 | 35449 | 249 | 142 | 35164 | 267 | 132 | 35541 | 249 | 143 | 34694 | 231 | 150 | 35496 | 240 | 148 | 35430 | 240 | 148 |
| | Bug Rating | | B3-U0-G4 | | | B4-U0-G4 | | | B4-U0-G4 | | | B4-U0-G4 | | | B4-U0-G2 | | | B5-U0-G1 | | | B5-U0-G4 | | |
| | 40L | 40,000 | 38977 | 277 | 141 | 39697 | 286 | 139 | 39947 | 313 | 128 | 39800 | 286 | 139 | 40414 | 277 | 146 | 39982 | 277 | 145 | 39908 | 277 | 144 |
| Bug Rating | | B4-U0-G4 | | | B4-U0-G4 | | | B4-U0-G5 | | | B4-U0-G5 | | | B4-U0-G2 | | | B5-U0-G1 | | | B5-U0-G4 | | | |
| Requires 2 x S215 | 45L | 45,000 | N/A | | | N/A | | | N/A | | | N/A | | | 44670 | 313 | 143 | 45211 | 322 | 140 | 45127 | 322 | 140 |
| | Bug Rating | | N/A | | | N/A | | | N/A | | | N/A | | | B4-U0-G2 | | | B5-U0-G1 | | | B5-U0-G5 | | |
| | Angled Back Light Shield | | N/A | | | N/A | | | N/A | | | N/A | | | 2 x S215 | | | 2 x S215 | | | 2 x S215 | | |

