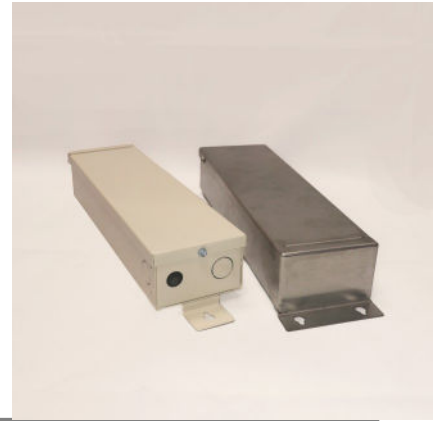




SPECIFICATION SHEET

SEBCO LE Power Supplies



FEATURES

- 5 YEAR FREE REPLACEMENT WARRANTY
- 0-10V DIMMING OPTION AVAILABLE. CONSULT FACTORY
- NEMA 3R OUTDOOR RATED ENCLOSURE..
- ALUMINUM ENCLOSURE WITH CHROMATE SEAL OR STAINLESS STEEL AVAILABLE
- PRIMARY VOLTAGE RANGE FROM 100-305VAC. LINE CORD AVAILABLE.
- WATTAGE RANGE FROM 100 - 240 WATTS. 12VDC CONSTANT VOLTAGE SECONDARY
- MEETS OR EXCEEDS ALL UL, CUL, ANSI/UL, CSA REQUIREMENTS

REQUIREMENTS



- LISTED TO UL 2108; 1838
- CSA CERTIFIED C22.2#218.1:2013 ED 2 + E1
- MAY BE USED WITH INDIVIDUAL "LISTED" COMPONENTS TO MEET SYSTEM REQUIREMENTS AS LONG AS ALL PARTS ARE LISTED TO SAME ANSI/UL STANDARD

PART NUMBER	LE-100-12	LE-150-12	LE-185-12
PRIMARY VOLTAGE	100-305VAC	100-305VAC	100-305VAC
OUTPUT VOLTAGE	12VDC / 10A	12VDC / 12.5A	24VDC / 13A
FREQUENCY	47—63Hz	47—63Hz	47—63Hz
WATTAGE	100 Watts	150 Watts	156 Watts
DIMENSIONS	15" x 3.5" x 2.5"	15" x 3.5" x 2.5"	15" x 3.5" x 2.5"
WEIGHT	7 LBS	8 LBS	9 LBS

WWW.SEBCOINDUSTRIES.COM

CALIFORNIA OFFICE (714) 557-1710 / TEXAS OFFICE (817) 464-0145